

INSTRUCTION MANUAL

IGLÚ

Portable air conditioner



TABLE OF CONTENTS

1. Safety Awareness.....	1
2. Name of Parts	4
3. Accessories.....	4
4. Appearance and Function of Control Panel	5
5. Appearance and Function of Remote Control.....	5
6. Introduction on how to operate the unit.....	6
7. How to install.....	8
8. Maintenance	10
9. Troubleshooting.....	11
10. Guarantee	12

1. SAFETY AWARENESS

VERY IMPORTANT!

Please do not install or use your portable air conditioner before you have carefully read this manual. Please keep this instruction manual for future reference.

Warning:

Do not use means to accelerate the defrosting process or to clean, other than those recommended by the manufacturer.

The appliance shall be stored in a room without continuous operating ignition sources (for example: open flames, an operating gas appliance or an operating electric heater).

Do not pierce or burn.

Be aware the refrigerants must not contain an odour.

Appliance shall be installed, operated and stored in a room with a floor area larger than X m².

MODEL	X m ²
5000Btu/h,7000Btu/h,8000Btu/h	4
9000Btu/h,10000Btu/h,10500Btu/h	12
12000Btu/h,14000,16000Btu/h,18000Btu/h	15

IMPORTANT SAFEGUARDS

- This appliance can be used by children aged from 8 years and above and persons with reduced physical, sensory or mental capabilities or lack of experience and knowledge if they have been given supervision or instruction concerning use of the appliance in a safe way and understand the hazards involved.
- Children shall not play with the appliance.
- Cleaning and user maintenance shall not be made by children without supervision.
- Disconnect the appliance from its power source during service and when replacing parts.
- The appliance shall be installed in accordance with national wiring regulations.
- **Warning:** Before obtaining access to terminals, all supply circuits must be disconnected.
- If the supply cord is damaged, it must be replaced by the manufacturer, its service agent or a similar qualified person in order to avoid a hazard.
- Disconnect the power supply before cleaning and maintenance.
- The appliance shall not be installed in the laundry.
- **Please note:** Check the nameplate for the type of refrigerant gas used in your appliance.
- Specific information regarding appliances with refrigerant gas.
- R290 is a refrigerant that complies with European ecological standards; nevertheless, it is recommended not to pierce the cooling circuit of the machine. At the end of its useful life, deliver the appliance to a special waste collection centre for disposal.
- This hermetically sealed system contains fluorinated greenhouse gases.
- **ENVIRONMENTAL INFORMATION:** This unit contains fluorinated greenhouse gases covered by the Kyoto Protocol.
- The maintenance and disposal operations must be carried out by qualified personnel only. (For more details on the refrigerant, see back cover).
- GWP (Global Warming Potential): R290: 3.
- Do not use this unit for functions other than those described in this instruction manual.
- If the power cord becomes worn or damaged, the cord should only be replaced by a qualified service technician using genuine replacement parts.

- Make sure the plug is plugged firmly and completely into the outlet, otherwise it can result in the risk of electric shock or fire.
- Do not plug other appliances into the same outlet, it can result in the risk of electric shock.
- Do not disassemble or modify the appliance or the power cord, it can result in the risk of electric shock or fire. All other services should be referred to a qualified technician.
- Do not place the power cord or appliance near a heater, radiator, or other heat source. It can result in the risk of electric shock or fire.
- This unit is equipped with a cord that has a earthed wire connected to an earthed pin or grounding tab. The plug must be plugged into a socket that is properly installed and earthed. Do not under any circumstances cut or remove the earthed pin or grounding tab from this plug.
- The unit should be used or store in such a way that it is protected from moisture e.g. condensation, splashed water, etc. Unplug unit immediately if this occurs.
- Always transport your appliance in a vertical position and place on a stable, level surface during use. If the unit is transported laying on its side it should be stood up and left unplugged for 6 hours.
- Always use the switch on the control panel or remote control to turn the unit off, and do not start or stop operation by plugging in or unplugging the power cord. It can result in the risk of electric shock.
- Do not touch the buttons on the control panel with your wet and damp fingers.
- Do not use hazardous chemicals to clean or come into contact with the unit. To prevent damage to the surface finish, use only a soft cloth to clean the appliance. Do not use wax, thinner, or a strong detergent. Do not use the unit in the presence of inflammable substance or vapour such as alcohol, insecticides, gasoline, etc.
- Young children should be supervised to ensure that they do not play with, operate or climb on the appliance.
- If the appliance is making unusual sounds or is emitting smoke or an unusual odor, unplug it immediately.
- Do not clean the unit with water. Water can enter the unit and damage the insulation, creating a shock hazard. If water enters the unit, unplug it immediately and contact Customer Service.
- Utilize two or more people to lift and install the unit.
- Be sure all accessories are removed from the packing before use.
- To avoid possible cuts, avoid contacting the metal parts of the appliance when removing or re-installing the filter. It can result in the risk of personal injury.
- Do not block the air inlet or outlet of the appliance. Reduced air flow will result in poor performance and could damage the unit.
- Always grasp the plug when plugging in or unplugging the appliance. Never unplug by pulling on the cord. It can result in the risk of electrical shock and damage.
- Install the appliance on a sturdy, level floor capable of supporting up to 110lbs(50kg). Installation on a weak or unlevelled floor can result in the risk of property damage and personal injury.
- Close all doors and windows to the room for most efficient operation.

IMPORTANT - GROUNDING METHOD

This product is factory equipped with a power supply cord that has a three-pronged grounded plug. It must be plugged into a mating grounding type receptacle in accordance with the National Electrical Code and applicable local codes and ordinances. If the circuit does not have a grounding type receptacle, it is the responsibility and obligation of the customer to exchange the existing receptacle in accordance with the National Electrical Code and applicable local codes and ordinances. The third ground prong should not, under any circumstances, be cut or removed. Never use the cord, the plug or the appliance when they show any sign of damage. Do not use your appliance with an extension cord unless it has been checked and tested by a qualified electrical supplier. Improper connection of the grounding plug can result in risk of fire, electric shock and/or injury to persons associated with the appliance. Check with a qualified service representative if in doubt that the appliance is properly grounded.

ELECTRICAL CONNECTIONS

Before plugging the appliance into the mains socket, check that:

- The mains power supply corresponds to the value indicated on the rating plate on
- the back of the appliance.

- The power socket and electrical circuit are adequate for the appliance.
- The mains socket matches the plug. If this is not the case, have the plug replaced.
- The mains socket is adequately earthed. Failure to follow these important safety instructions absolves the manufacturer of all liability.

Important information for correct disposal of the product in accordance with EC Directive 2012/19/EU.



At the end of its working life, the product must not be disposed of as urban waste. It must be taken to a special local authority differentiated waste collection centre or to a dealer providing this service. Disposing of a household appliance separately avoids possible negative consequences for the environment and health deriving from inappropriate disposal and enables the constituent materials to be recovered to obtain significant savings in energy and resources. As a reminder of the need to dispose of household appliances separately, the product is marked with a crossed-out wheeled dustbin.

SOME NOTES ON HUMIDITY

Air always contains a certain amount of water in the form of vapour. This determines the level of humidity in an atmosphere. The capacity of the air to hold water vapour increases with temperature. This is why in our homes, as soon as the temperature decreases, the vapour contained in the air condenses, as is evident on the colder surfaces in the room, such as the windows, walls, etc. The purpose of a dehumidifier is to remove the excess moisture from the air, avoiding the damage caused by condensation.

Experts have established that the optimum environmental conditions for our well being and for the home are obtained between 40 % and 60 % relative humidity. With very low temperature loss, you are recommended to heat the room even minimally. This increases considerably the deshumidifying power of the appliance. With heating, the condensation formed by the water vapour on windows and other cold surfaces evaporates into the air to be collected by the dehumidifier. Air leaving the dehumidifier is usually about 1°C-2°C warmer than room temperature.

SPECIFIC INFORMATION REGARDING APPLIANCES WITH R290 REFRIGERANT GAS

- Thoroughly read all of the warnings.
- When defrosting and cleaning the appliance, do not use any tools other than those recommended by the manufacturing company.
- R290 is a refrigerant gas that complies with the European directives on the environment. Do not put in any part of the refrigerant circuit.
- If the appliance is installed, operated or stored in a non-ventilated area, the room must be designed to prevent the accumulation of refrigerant leaks resulting in a risk of fire or explosion due to ignition of the refrigerant caused by electric heaters, stoves, or other sources of ignition.
- The appliance must be stored in such a way as to prevent mechanical failure.
- Individuals who operate or work on the refrigerant circuit must have the appropriate certification issued by an accredited organisation that ensures competence in handling refrigerants according to a specific evaluation recognized by associations in the industry.
- Repairs must be performed based on the recommendations from the manufacturing company.
- Maintenance and repairs that require the assistance of other qualified personnel must be performed under the supervision of an individual specified in the use of flammable refrigerants.



2. NAME OF PARTS

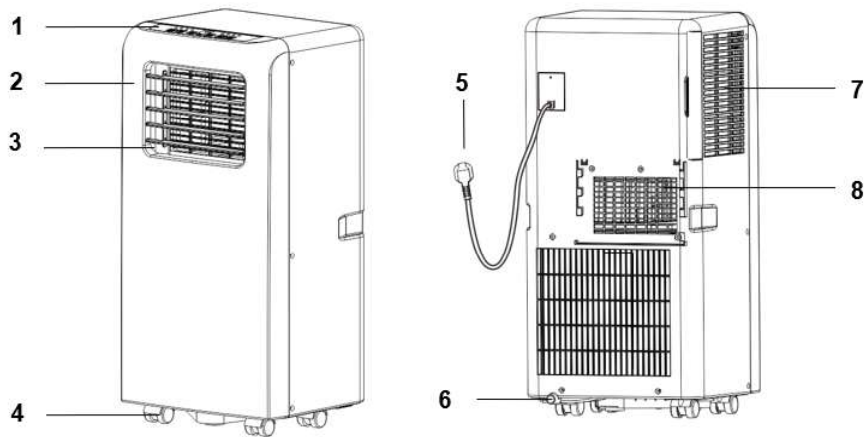











Fig.1

1	Control panel	5	Power cord
2	Front cover	6	Drainage outlet
3	Louver	7	Air inlet
4	Castor	8	Air outlet

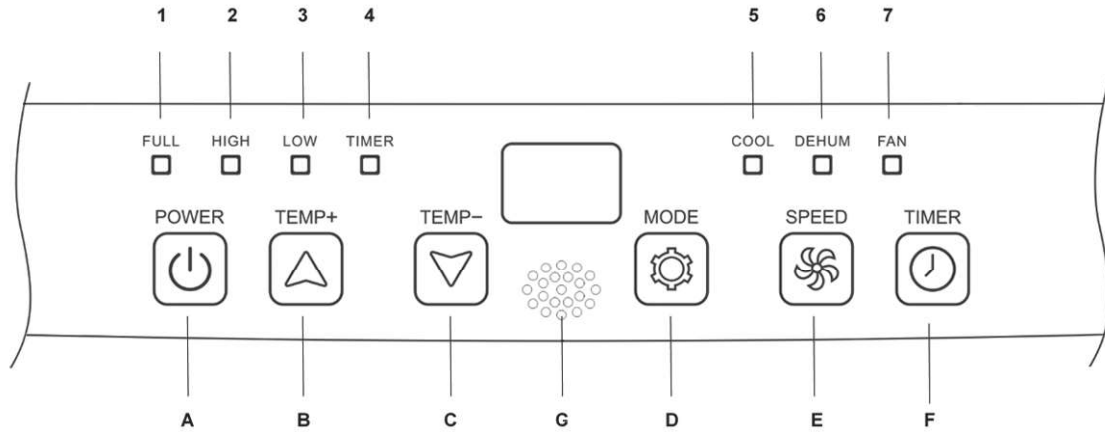
3. ACCESSORIES

Part	Description	Quantity
	Exhaust hose	1
	Window Connector	1
	Housing adaptor	1
	Remote Controller	1
	Window Kit	1
	Dowel	2
	Air outlet	1
	Water pipe	1
	Batteries	2

After unpacking, please check whether the above-mentioned accessories are included, and check their purposes in the installation introduction in this manual.

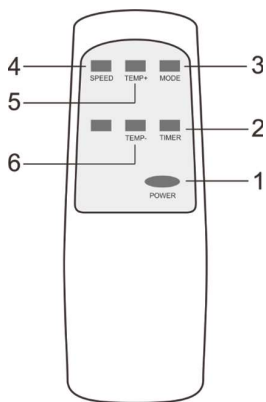
4. APPEARANCE AND FUNCTION OF CONTROL PANEL

Cooling only model:



A	Power on/off	1	Water full
B	Temperature up	2	High fan speed
C	Temperature down	3	Low fan speed
D	Operation MODE	4	Timer on/off
E	Fan speed	5	Cooling
F	Timer on/off	6	Dehumidifying
G	Signal receiver	7	Fan

5. APPEARANCE AND FUNCTION OF REMOTE CONTROL



1	Power on/off
2	Timer on/off
3	Operation MODE
4	Fan speed
5	Temperature up
6	Temperature down

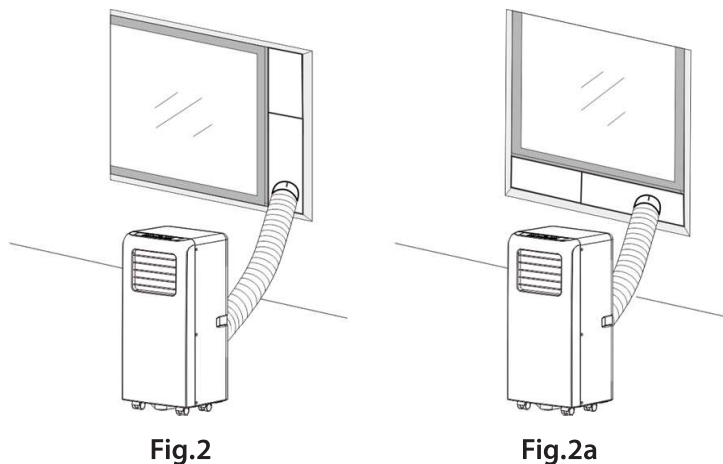
Notes:

- Do not drop the remote control.
- Do not place the remote control in a location exposed to direct sunlight.

6. INTRODUCTION ON HOW TO OPERATE THE UNIT

Before starting to operate the unit:

- 1) Find a place where there is power supply nearby.
- 2) As shown in Fig.2 and Fig.2a, install the exhaust hose, and adjust the window position well.



- 3) As shown in Fig. 2, connect drain hose well (only for using heating model)
- 4) Insert the power cord into an grounded AC220~240V/50Hz socket;
- 5) Press the POWER button to turn on the air-conditioner.

1.Before using

Notice:

- Operation temperature range:

	Maximum cooling	Minimum cooling
DB/WB(°C)	35/24	18/12

Check whether the exhaust hose has been mounted properly.

Cautions for cooling and dehumidifying operations:

- When using cooling and dehumidifying functions, keep an interval of at least 3 minutes between each MODE.
- Power supply meets the requirements.
- The socket is for AC use.
- Do not share one socket with other appliances.
- Power supply is AC220-240V/50Hz

2. Cooling operation

- Press the "Mode" button till the "Cool" icon appears.
- Press the "▲" or "▼" button to select a desired room temperature. (16°C - 31°C)
- Press the "Fan Speed" button to select wind speed.

3. Dehumidifying operation

Press the "Mode" button till the "Dehumidify" icon appears .

- Automatically set the selected temperature to current room temperature minus 2°C.
- Automatically set the fan speed to LOW wind speed.

4. Fan operation

- Press the "Mode" button till the "Fan" icon appears.

- Press the "Fan Speed" button to select wind speed.

5. Timer operation

Timer ON setting:

- When the air-conditioner is OFF, press the "Timer" button and select a desired ON time through the temperature and time setting buttons.
- ON time can be regulated at any time between 0-24 hours.

Timer OFF setting

- When the air-conditioner is ON, press "Timer" button and select a desired OFF time through the temperature and time setting buttons.
- OFF time can be regulated at any time between 0-24 hours.

6. Continuous Drainage

Internal Tank Water Full Alarm Function

The inner water tank in the air-conditioner has one water level safety switches, it controls the water level. When water level reaches an anticipated height, the water full indicator lights up. When the water is full, please remove the rubber blockage from the drainage hole at the bottom of the unit, and drain all water outside.

Continuous Drainage

- When you plan to leave this unit unused for a long time, please remove the rubber blockage from the drainage hole at the bottom of the unit, and drain all water outside.
- The continuous drainage is not need to be applied when the unit working at the COOL or DEHUMIDIFY mode. The unit can evaporate the condensated water automatically by the splash motor. Make sure the drainage holes are stemmed well.
- If water splash motor is damaged, continuous drainage can be used. To connect the drain hose to the bottom drain hole (Fig.6), the unit can also work well.
- If the splash motor is damaged, the intermittent drainage can also be used. Under this condition, when the water full indicator lights up, please connect a drain hose to the bottom drainage hole, then all the water in the water tank will be drained outside. The unit can also work well.

7. INSTALLATION EXPLANATIONS

1. Installation Explanations:

- The air-conditioner shall be installed in the flat and with empty place all around. Don't block the air outlet, and keep 30cm safety distance all around the unit. (See Fig.3)

- It should not be installed in wet location, such as the laundry room.

- Socket wiring should be in accordance with the local electric safety requirements.

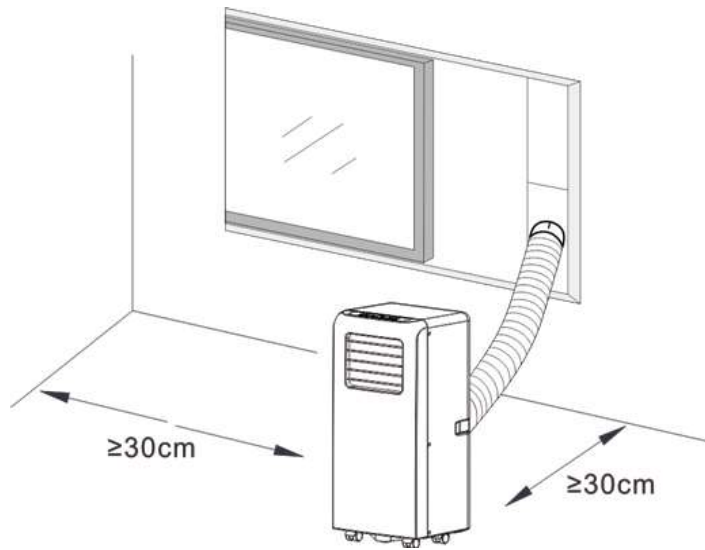


Fig.3

2. Introduction to Installing the exhaust hose:

A) Temporary installation

1. Twist both ends of the exhaust hose into the Hose Connector.

2. Insert the square fixing clip into air outlet at back of the air conditioner (see Fig.4).

3. Put the other end of the exhaust hose to the near windowsill.

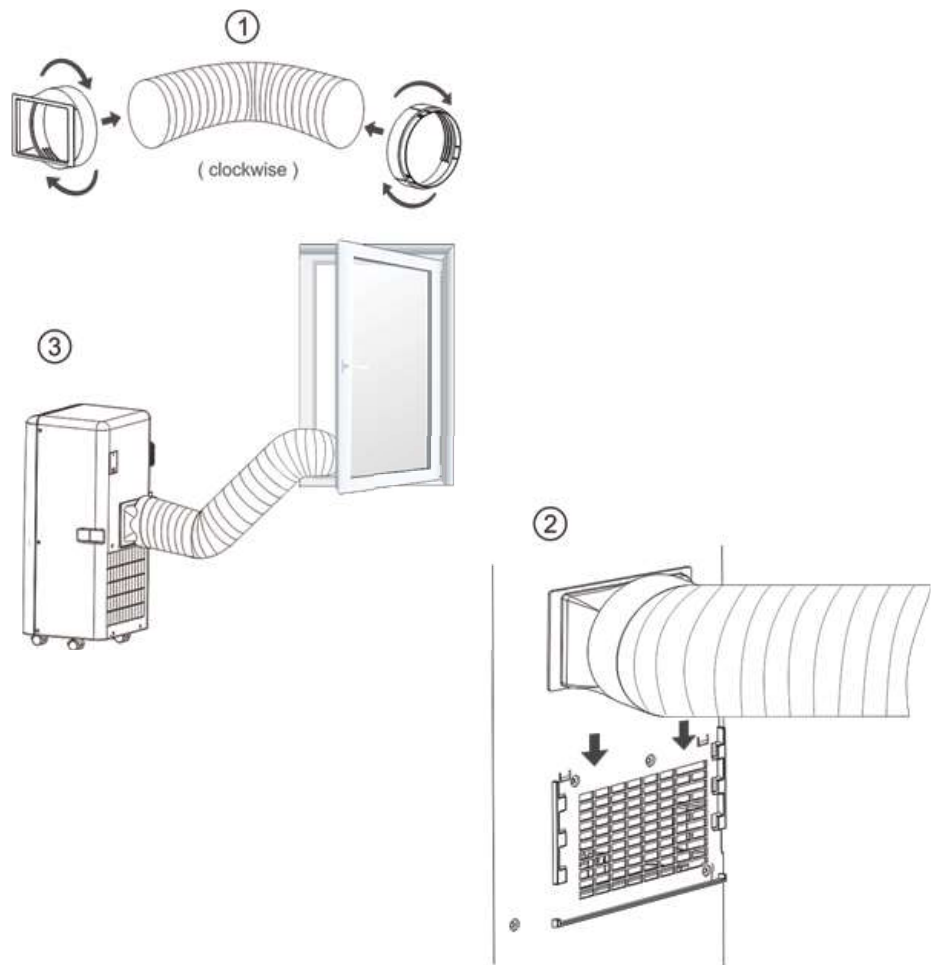


Fig.4

B) Window Slider Kit Installation

The window slider can be installed either "vertically" or "horizontally". As shown Fig.5 and Fig.5a, check the min. and max. size of the window before the installation.

1. Install the window kit on the window (Fig.5, Fig.5a);
2. Adjust the length of the window slider kit according to the window width or height, and fix it with the dowel;
3. Insert the Window Connector hose to the hole of the Window Kit.

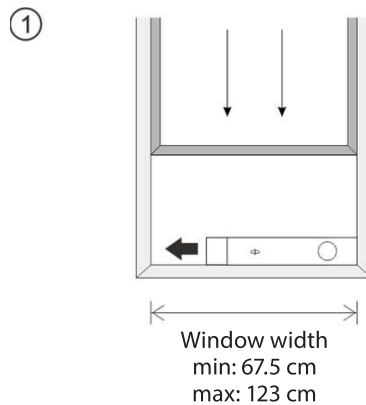


Fig.5

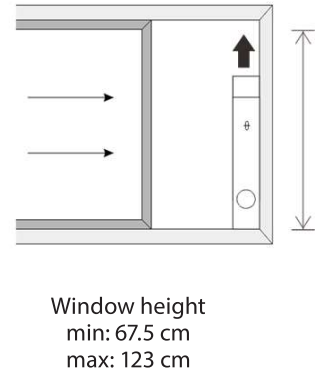
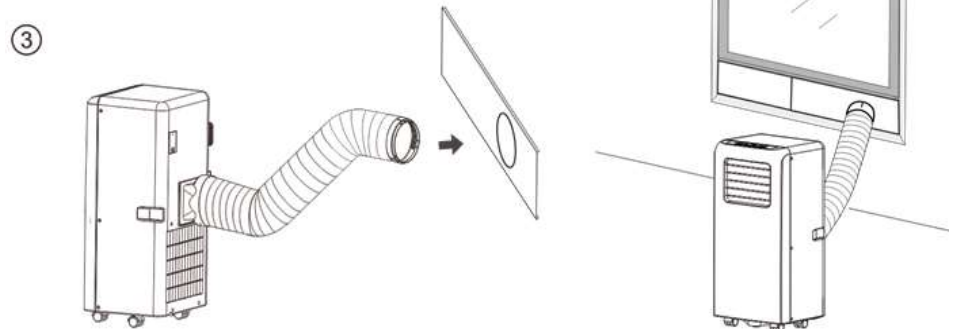
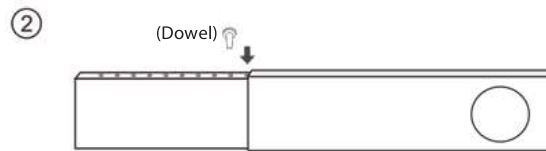


Fig.5a



Internal Tank Water Full Alarm Function

The inner water tank in the air-conditioner has one water level safety switches, it controls water level. When water level reaches an anticipated height, the water full indicator lamp lights up. (If water pump is damaged, when the water is full, please remove the rubber blockage at the bottom of unit, and all the water will be drained outside.)

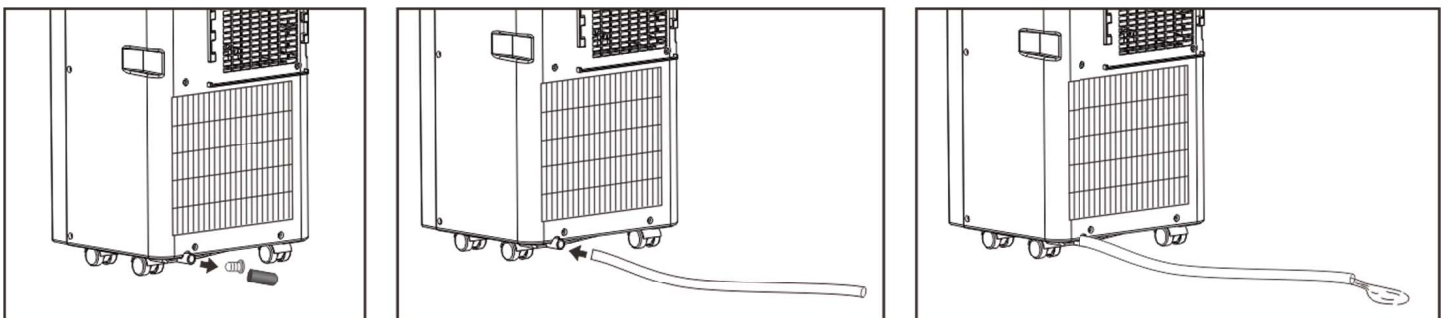
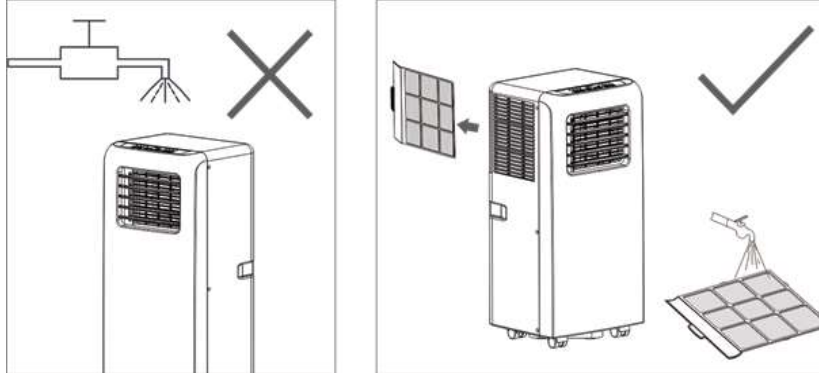


Fig.6

8. MAINTENANCE EXPLANATIONS

Declaration:

- 1) Before cleaning, be sure to disconnect the unit from any electric supply outlet;
- 2) Do not use gasoline or other chemicals to clean the unit;
- 3) Do not wash the unit directly;
- 4) If the conditioner is damaged, please contact the dealer or repair shop.



1. Air Filter:

- If the air filter becomes clogged with dust/dirt, the air filter should be cleaned once every two weeks.

- Dismounting

Open the air inlet grille and take off air filter.

- Cleaning

Clean the air filter with neutral detergent with lukewarm water (40°C) and dry it in the shade.

- Mounting

Putting the air filter into the inlet grille, replace the components as they were.

2. Clean the Air-conditioner Surface:

First clean the surface with a neutral detergent and wet cloth, and then wipe it with a dry cloth.

9. TROUBLESHOOTING

Troubles	Possible Causes	Suggested Remedies
1. Unit does not start when pressing on/off button	- Water full indicator lamp blinks, and water tank is full.	Dump the water out of the water tank.
	- Room temperature is lower than the setting temperature.	Reset the temperature.
2. Not cool enough	- The doors or windows are not closed.	Make sure all the windows and doors are closed.
	- There are heat sources inside the room.	Remove the heat sources if possible
	- Exhaust air hose is not connected or blocked.	Connect or clean the exhaust air hose.
	- Temperature setting is too high.	Reset the temperature.
	- Air inlet is blocked.	Clean the air inlet.
3. Noisy.	- The ground is not level or not flat enough.	Place the unit on a flat, level ground if possible.
	- The sound comes from the flowing of the refrigerant inside the air conditioner.	It is normal.
4. E0 Code	Room temperature sensor failed	Replace room temperature sensor (the unit can also work without replacement.)
5. E1 Code	Condenser temperature sensor failed.	Replace condenser temperature sensor
6. E2 Code	Water tank full when cooling.	Take off rubber stopper and empty the water.
7. E3 Code	Evaporator temperature sensor failed.	Replace evaporator temperature sensor .

Note: The real products may look different.

10. GUARANTEE

MARSAN INDUSTRIAL, S.A. guarantees that the devices comply with the contracted specifications.

This warranty only covers the model of heater showed on the valid invoice.

Such rectifications will be guaranteed against any manufacturing and operating defect for the normal and domestic use of this product, for a period of 24 months as from the purchase date shown on the invoice.

HAVERLAND guarantees against material, design or manufacturing faults at the moment of its original acquisition for 2 years.

This warranty only covers the device whose model appears on the purchase invoice.

This warranty DOES NOT COVER incorrect installation, maintenance, cleaning or conserving the device, and neither does it cover failures and faults due to force, chemical agents or atmospheric phenomena, incorrect use of the device, the purchaser's faulty electrical installations, transporting the device or problems caused by the device being handled by persons not authorised by MARSAN INDUSTRIAL, S.A.

This warranty must not be modified, altered or extended, and the Manufacturer does not authorise anybody to act on his behalf to modify, alter or extend it.

This warranty applies only to the Product.

To repair the device, the consumer must dial the Technical Assistance Service at 0330 3651940 or send an email to haverland@haverland.co.uk and ask for the information needed about the procedure to follow:

For a replacement, cancellation or price reduction, when in order, the consumer must go the establishment where the device was purchased. This warranty does not affect the consumers' rights as established in the provisions contained In Ley 23/2003, the Consumer Goods Sales Guarantee Act.



Customer Service Telephone:
0330 3651940



E-mail: haverland@haverland.co.uk

Haverland UK Limited
Challenge House
Sherwood Drive
Bletchley MK3 6DP

Made in R.F.C.

Marsan Industrial, S.A. reserves the right to modify without previous warning