

KYROS

**LOW CONSUMPTION
INTEGRAL DIGITAL HEATING
AND DOMESTIC HOT WATER (D.H.W.)**

The perfect balance
between design and functionality



ROINTE'S NEW WEBSITE NOW EVERYTHING YOU NEED IN JUST A CLICK

A world of possibilities awaits you in our new web portal, the place where from now on you can find all the support that you need. Administer your business with Rointe & learn interactively about the benefits that our heating system offers. Discover all its contents now!

MY ROINTE

Check your details, order marketing directly or download product manuals and our calculation program. Contact your Key Account Manager for details.

ROINTE ACADEMY

Interactively discover the benefits and advantages of the Rointe Digital System and how all of its component products function. All the information from the Rointe Seminars is now available online and within your reach to offer you the very best training!

ROINTE MARKETING

Order online, request technical catalogues, leaflets, display stands and streamline your deliveries etc. You can also request the help of our Regional Commercial Directors to accompany you on your visits or to help close projects and installations.

Don't hesitate! Go now onto our new website and benefit from all these extraordinary Rointe advantages.

www.rointe.co.uk

Your new day-to-day
working tool

User ID Password I forgot my password Rointe UK

Rointe
natural heat

MODELS ACCESSORIES CONTACT COMMERCIAL MAP PROMOTIONS NEWS

Home > End User

KYROS

The perfect balance between **design** and **functionality**

EXPLORE KYROS RADIATORS
EXPLORE KYROS TOWEL RAILS
EXPLORE KYROS BATHROOM HEATERS

Rointe ECOplan
Your best financing plan

Rointe marketing
Request your Rointe Catalogue

Rointe Academy
Rointe Academy Training Center

© Industrias Royal Termic, S.L. All rights reserved [Privacy Policy](#)

REPSOL

Index

4

ROINTE KYROS SYSTEM



Rointe KYROS: Better performance, less consumption	4
Fuzzy Logic Energy Control: Technology for maximum energy saving	5

6

KYROS RADIATORS



KYROS radiators	6
Technical characteristics	7

8

KYROS TOWEL RAILS



KYROS towel rails	8
Technical characteristics	9

10

KYROS WATER HEATERS



KYROS water heaters and accessories	10
Technical characteristics	11

12

AIR CONTROL REMOTE CONTROL



AIR Control remote control	12
Technical characteristics	13

14

ROINTE R.T.C & CALCULATIONS



RTC: Rointe Thermal Coefficient	14
Calculations	16

18

KYROS SYSTEM PRICE LIST



KYROS SYSTEM price list	18
Rointe accessories price list and general conditions of sale	19



ROINTE KYROS

BETTER PERFORMANCE, LESS CONSUMPTION

Rointe KYROS provides the user a complete low consumption digital integral system with the maximum quality guarantee in all of the elements with which it is made. Thanks to the advanced **Fuzzy Logic Energy Control** technology, you can enjoy the comfort and wellbeing assured by Rointe and with reduced consumption.



The products in the Rointe KYROS range incorporate **exclusive ULP8 Ultra Low Power microcontrollers** which together with **Fuzzy Logic Energy Control** technology guarantee a greater efficiency and therefore a notable saving in their equivalent ratio of consumption.

Now enjoy the entire Rointe KYROS range with a renewed and exclusive design and a modern, up to date line, because style does not have to be at the cost of comfort or technology.

With Rointe KYROS you benefit from the Rointe maximum quality guarantee, greater energy efficiency and the wellbeing that you desire.



KYROS range: low consumption, high performance.

With the **KYROS** range you choose how to control your system.



TOUCH CONTROL PANEL

Control all of the functions of the KYROS range products via their integrated control panel.



INFRARED CONTROL

You can also control the KYROS products using the exclusive Air Control infrared remote control.

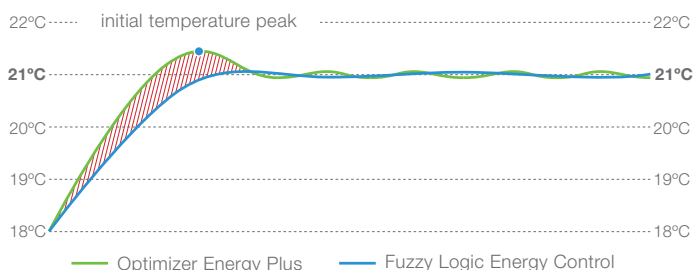


FUZZY LOGIC ENERGY CONTROL

TECHNOLOGY FOR MAXIMUM ENERGY SAVING

Fuzzy Logic Energy Control is a new and significant development introduced by the Rointe R&D department that represents a considerable technological advance to heating and hot water products.

The patented **Fuzzy Logic Energy Control** technology is a natural evolution from its predecessor **Optimizer Energy Plus**. It administers the product start up more quickly and efficiently thanks to a more precise control over the calculation of the power requirement required to reach the established temperature. This calculation is based on three fundamental values:

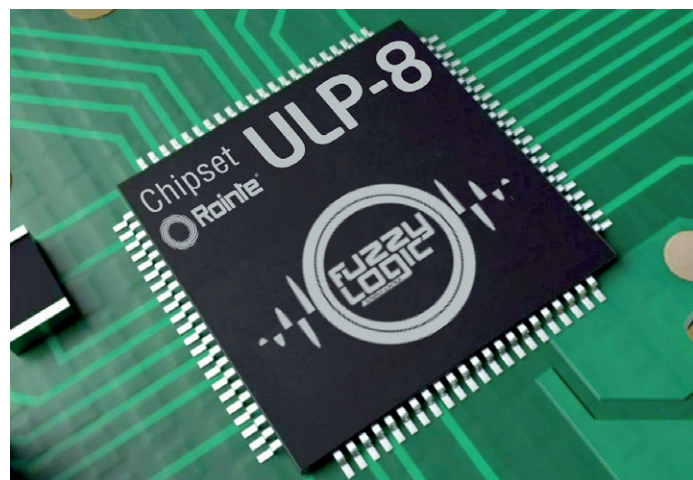


How does it work?

As we can see in the upper graph, from startup and throughout the heat rise curve, the **Fuzzy Logic Energy Control** predicts the quantity of power required in each moment until reaching the temperature established by the user which in this case is 21°C. This technology proportionally reduces the electric power necessary to reach the desired temperature by softening the initial curve, reducing the temperature peaks and, thanks to the multiple stop-starts occurring during the stable period that follows, it favours a greater temperature stabilisation.

The Rointe products with the Fuzzy Logic Energy Control technology decrease the equivalent ratio of consumption by up to 6%* compared with those that incorporate the Optimizer Energy Plus technology.

*Maximum reduction of the equivalent ratio of consumption percentage obtained from tests performed by Rointe.

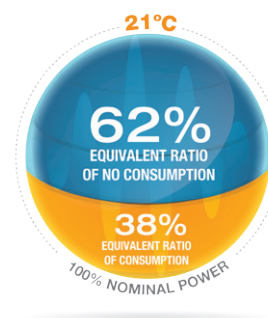


TEMPERATURE STABILITY

Fuzzy Logic Energy Control improves the administration of the power necessary to maintain a stable room temperature, analysing its variations with a **precision of $\pm 0.25^\circ\text{C}$** . It sends electronic micro pulses to the heating element which, together with the thermal fluid and highly pure aluminium, provides a rapid transfer of 100% of the heat to the surroundings.

MAXIMUM EFFICIENCY

The efficient administration by the **Fuzzy Logic Energy Control**, in addition to achieving excellent room temperature stability and an improved power administration in the initial radiator heat rise curve, allows us to obtain an **equivalent consumption coefficient of only 38% of the nominal power**, thereby producing significant savings of up to 62% in the equivalent non-consumption coefficient.



OPTIMAL BALANCE IN W/ELEMENT

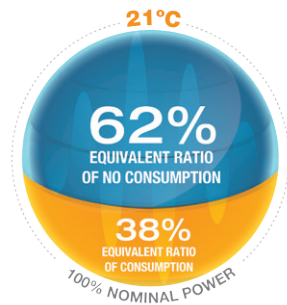
The 110 W/element of the KYROS radiator supplies a balanced heat transmission, unlike other radiators that use between 125 and 160 W/element. These others are less thermally balanced. As a consequence of this heat balance we can determine an approximate relationship of **1 element per m²** that needs to be heated in an extra cold zone.



KYROS RADIATORS

ROINTE QUALITY AND TECHNOLOGY PROVIDING YOUR COMFORT

Rointe offers you the opportunity to enjoy the most complete and modern radiator with a compact finish, a modern appearance and patented **Fuzzy Logic Energy Control** technology, which provides **up to 62% savings in power consumption compared with other technologies**, ideal for installation in any environment, domestic or public.



LOW CONSUMPTION

Thanks to Fuzzy Logic Energy Control technology, the average power consumed by the KYROS radiators accounts for only 38% of its nominal power.



LEFT SIDE END PANEL

New design with end panels on both sides to give the product a compact and consistent appearance.



OPTIMIZED DESIGN FOR MAXIMUM DISSIPATION

Maximum performance thanks to the new design of the blade like fins and 98 mm depth of each element, with volume for up to 50% more thermal fluid than other products on the market.



SMD ELECTRONICS & ADVANCED TECHNOLOGY

Multilayer surface mounted electronics incorporating Rointe ULP8 ultra low power microcontroller, long lasting lithium battery and Triac as a cut off element.



OPTIMAL BALANCE BETWEEN W/ELEMENT

Each 110 watts per element, provides a balanced heat transmission to the surroundings, compared with other manufacturers that consume between 125 and 160 watts per element, thus being less efficient.



TFT SCREEN

Latest generation high contrast 1.77" TFT screen for optimal viewing from any angle.



INFRARED COMMUNICATION

Programmable 24 hours per day, 7 days a week via the AIR Control infrared remote control.



KEYPAD PROGRAMMING

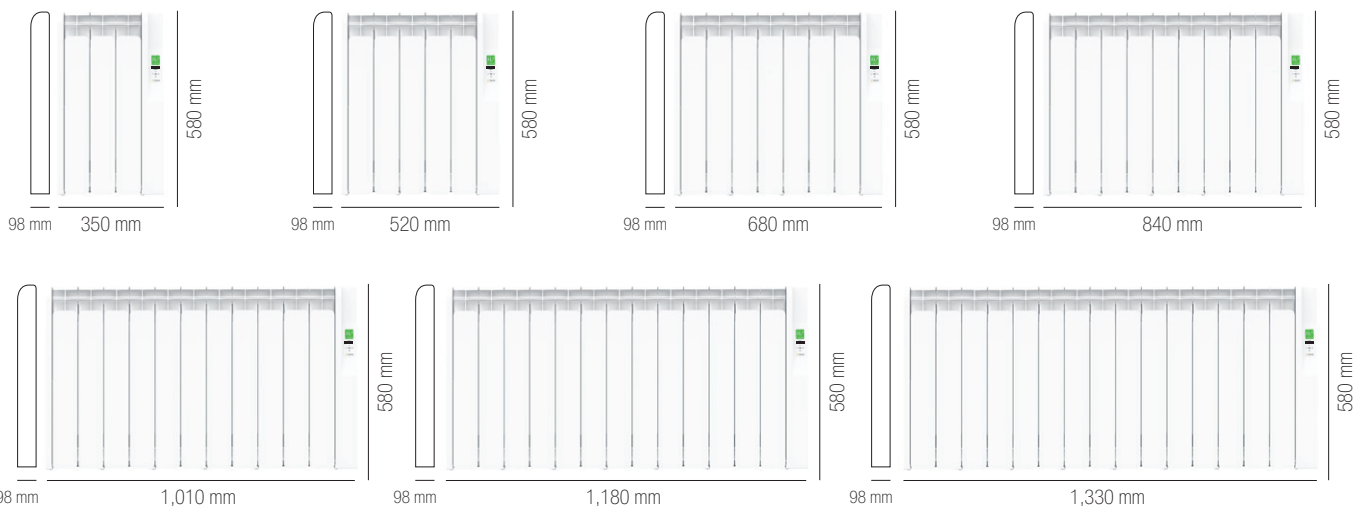
Total control at the radiator itself through integrated control panel.



QUALITY ASSURANCE

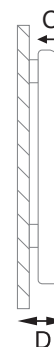
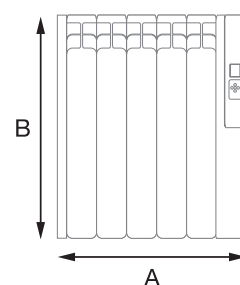
Total security with 10 year warranty on aluminum and 2 years on electrical and electronic components.

🕒 KYROS RADIATOR MODEL RANGE



☉ KYROS RADIATOR TECHNICAL CHARACTERISTICS

MODELS	KRI0330RAD2	KRI0550RAD2	KRI0770RAD2	KRI0990RAD2	KRI1210RAD2	KRI1430RAD2	KRI1600RAD2
Number of elements	3	5	7	9	11	13	15
DIMENSIONS							
A (mm) - width	350	520	680	840	1,010	1,180	1,330
B (mm) - height	580	580	580	580	580	580	580
C (mm) - depth	98	98	98	98	98	98	98
D (mm) - installed depth	120	120	120	120	120	120	120
MECHANICAL CHARACTERISTICS							
Armoured steel heating element	✓	✓	✓	✓	✓	✓	✓
High purity aluminium	✓	✓	✓	✓	✓	✓	✓
Thermal oil (+ 50% volume)	✓	✓	✓	✓	✓	✓	✓
PC/ABS panel with keypad	✓	✓	✓	✓	✓	✓	✓
Left side cover PC/ABS	✓	✓	✓	✓	✓	✓	✓
Weight (Kg)	10	14	18	22	26	30	34
Colour	White RAL 9010						
ELECTRICAL CHARACTERISTICS							
Nominal Power (W)	330	550	770	990	1,210	1,430	1,600
Effective Power (W)*	125	209	293	376	460	543	608
Voltage (V)	230 V ~	230 V ~	230 V ~	230 V ~	230 V ~	230 V ~	230 V ~
Current (A)	1.5	2.4	3.4	4.3	5.3	6.2	7.0
FUNCTIONALITY							
TFT screen (1.77 ")	✓	✓	✓	✓	✓	✓	✓
Manual / Automatic function	✓	✓	✓	✓	✓	✓	✓
Eco / Comfort mode	✓	✓	✓	✓	✓	✓	✓
Antifrost	✓	✓	✓	✓	✓	✓	✓
Open windows function	✓	✓	✓	✓	✓	✓	✓
Screen brightness	✓	✓	✓	✓	✓	✓	✓
Nominal and effective power	✓	✓	✓	✓	✓	✓	✓
Programmable 24/7 using keyboard and / or Air Control	✓	✓	✓	✓	✓	✓	✓
PERFORMANCE AND SECURITY							
Fuzzy Logic Energy Control	✓	✓	✓	✓	✓	✓	✓
Rointe ULP8 Microcontroller	✓	✓	✓	✓	✓	✓	✓
Temperature stability (°C)	±0.25	±0.25	±0.25	±0.25	±0.25	±0.25	±0.25
Air velocity (m/s)	< 0.1	< 0.1	< 0.1	< 0.1	< 0.1	< 0.1	< 0.1
Power per element (W/element)	110	110	110	110	110	110	110
Safety thermostat	✓	✓	✓	✓	✓	✓	✓
Average surface temp. during the steady period (°C)**	40 °C	40 °C	40 °C	40 °C	40 °C	40 °C	40 °C
Protection Grade	IP21	IP21	IP21	IP21	IP21	IP21	IP21
INSTALLATION							
Template	✓	✓	✓	✓	✓	✓	✓
Installation Kit	✓	✓	✓	✓	✓	✓	✓
CERTIFICATIONS							
2004/108/CE Electromagnetic Compatibility	✓	✓	✓	✓	✓	✓	✓
2006/95/EC Electronic Security	✓	✓	✓	✓	✓	✓	✓



* The effective power is the actual power required to heat a room of 12m² with a set temperature of 21°C, always under certain parameters and according to the results of the tests performed by independent laboratories.

** Average surface temperature obtained with the radiator temperature set to 21°C.



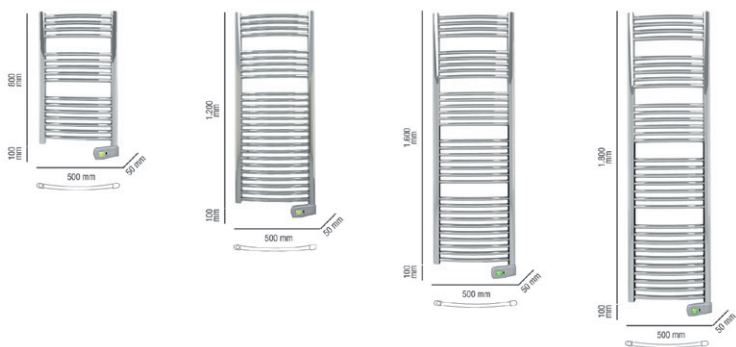
KYROS TOWEL RAILS

THE PERFECT BALANCE BETWEEN DESIGN AND FUNCTIONALITY

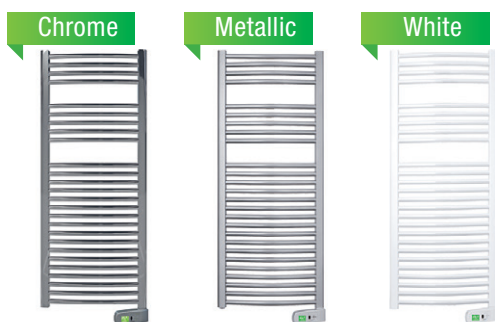
The KYROS towel rail range perfectly combines the most current design and latest Rointe technology. Thanks to its innovative control panel that allows the controllability of the product **it will achieve better comfort with reduced consumption**. There are three different finishes available: white, metallic or chrome; to ensure the end user **total adaptability to any environment**.

INFRARED CONTROLLED

▶ KYROS TOWEL RAIL RANGE



▶ KYROS TOWEL RAIL FINISHES



CURVED WATERTIGHT STEEL BODY

Made of a millimetre and a half thick ST12 for a steel electrically welded, perfect seal and with a curved design for greater convenience.



OPTIMUM RELATIONSHIP BETWEEN HEATING ELEMENT AND THERMAL FLUID

Class II heating element duly balanced in W per cm² and in contact with the thermal fluid to give the product a great heat transfer power.



SMD ELECTRONICS & ADVANCED TECHNOLOGY

Surface-mounted, multi-layer electronics incorporating Rointe ULP8 Ultra Low Power microcontroller and a long-life lithium battery.



TFT SCREEN

Latest generation 1.77" TFT display screen with high contrast for optimal viewing from any angle.



INFRARED COMMUNICATION

Programmable 24 hours per day 7 days a week via the AIR Control infrared remote control.



ADVANCED CONTROLLABILITY USING KEYPAD PANEL

Total control from the towel rail using the integrated keypad panel.



2H BOOST FUNCTION

Enable this option to set maximum power continuously for two hours.



KYROS TOWEL RAIL FINISHES

Chrome, Metallic, White



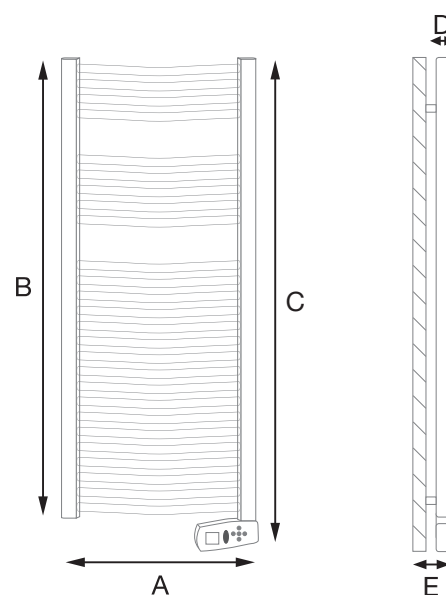
QUALITY ASSURANCE

Total security with 10 year warranty on the body of the towel rail and 2 years on electronic components.



☉ KYROS TOWEL RAIL TECHNICAL CHARACTERISTICS

MODELS	WHITE	KT1030SEB2	KT1050SEB2	KT1075SEB2	KT1100SEB2
	METALLIC	KT1030SEM2	KT1050SEM2	KT1075SEM2	KT1100SEM2
	CHROME	KT1030SEC2	KT1050SEC2	KT1075SEC2	KT1100SEC2
DIMENSIONS					
A (mm) - Width		500	500	500	500
B (mm) - Height without control panel		800	1,200	1,600	1,800
C (mm) - Height with control panel		900	1,300	1,700	1,900
D (mm) - Depth		50	50	50	50
E (mm) - Installed depth		100	100	100	100
MECHANICAL CHARACTERISTICS					
Armoured steel heating element		✓	✓	✓	✓
Thermal fluid		✓	✓	✓	✓
PC/ABS control panel		✓	✓	✓	✓
Weight (Kg)		11	15	22	28
Colour RAL	White	RAL 9016			
	Metallic	RAL 9006			
	Chrome	Chrome			
Design		Curved			
ELECTRICAL CHARACTERISTICS					
Rated power (W)	White	300	500	750	1,000
	Metallic	300	500	750	1,000
	Chrome	300	300	500	750
Voltage (V)		230 V ~	230 V ~	230 V ~	230 V ~
Current (A)	White	1.3	2.2	3.3	4.4
	Metallic	1.3	2.2	3.3	4.4
	Chrome	1.3	1.3	2.2	3.3
Class II		✓	✓	✓	✓
FUNCTIONS					
TFT screen (1.77 ")		✓	✓	✓	✓
Manual/automatic function		✓	✓	✓	✓
Eco / comfort mode		✓	✓	✓	✓
Antifrost		✓	✓	✓	✓
Open windows function		✓	✓	✓	✓
Screen brightness		✓	✓	✓	✓
2 hr boost function		✓	✓	✓	✓
Programmable 24/7 via control panel or AIR Control remote.		✓	✓	✓	✓
PERFORMANCE AND SECURITY					
Rointe ULP8 Microcontroller		✓	✓	✓	✓
Fire proof cabling		✓	✓	✓	✓
Safety thermostat		✓	✓	✓	✓
Protection grade		IP 44	IP 44	IP 44	IP 44
INSTALLATION					
Template		✓	✓	✓	✓
Installation Kit		✓	✓	✓	✓
CERTIFICATIONS					
2004/108/CE Electromagnetic compatibility		✓	✓	✓	✓
2006/95/EC electronic security		✓	✓	✓	✓

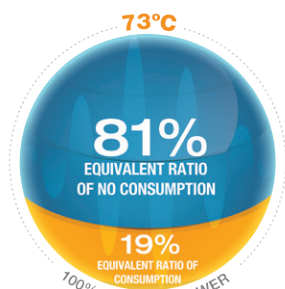




KYROS WATER HEATERS

MAXIMUM EFFICIENCY IN YOUR HOT WATER

Choosing a Rointe water heater means choosing an efficient and cost effective water heating solution. The range of KYROS water heaters with the latest Fuzzy Logic Energy Control technology allows the user to obtain a equivalent ratio of consumption of only 19% of the nominal power.



⦿ KYROS WATER HEATER RANGE 50L - 75L - 100L - 150L - 200L



LOW CONSUMPTION

Thanks to Fuzzy Logic Energy Control technology, the average power consumed by the KYROS water heaters accounts for only 19% of its nominal power.



ENAMELLED TANK

Made with one and a half mm thick sheet metal with a half mm enamel coating to protect the water heater against corrosion.



DOUBLE HEATING ELEMENT

Steel heating elements connected in parallel work independently to guarantee hot water at all times.



MAXIMUM INSULATION

Made with a 3cm thick rigid polyurethane foam that has a low thermal conductivity which prevents heat loss from the water heater contents.



SMD ELECTRONICS & ADVANCED TECHNOLOGY

Surface-mounted, multi-layer electronics incorporating Rointe ULP8 Ultra Low Power microcontroller, a long-life lithium battery and a Triac cut out element.



TFT SCREEN

Latest generation 1.77" TFT screen with high contrast for optimum viewing at any angle.



INFRARED COMMUNICATION

Programmable 24 hours per day 7 days a week via the AIR Control infrared remote control.



PROGRAMMABLE BY TOUCH PANEL CONTROL

Total control from the water heater itself via the integrated, backlit touch panel control.



ANTILEGIONELLA PROTECTION

Total security with this automatically activated system that raises the temperature of the water to 70 degrees thus eliminating all of the bacteria contained within the water.



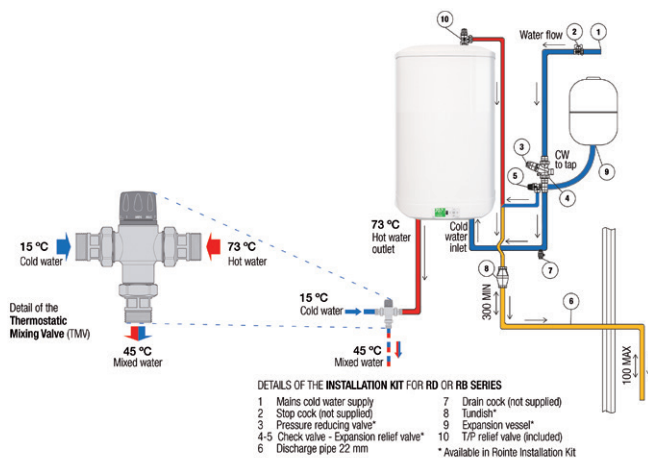
QUALITY ASSURANCE

Total security with 5 years guarantee on the water heater body and 2 years on the electronics and electrical components.

KYROS WATER HEATER ACCESSORIES DESCRIPTION

⦿ ENERGY SAVING KIT

This energy saving kit saves energy by minimizing heat loss through the pipes due to transporting water at a lower temperature.



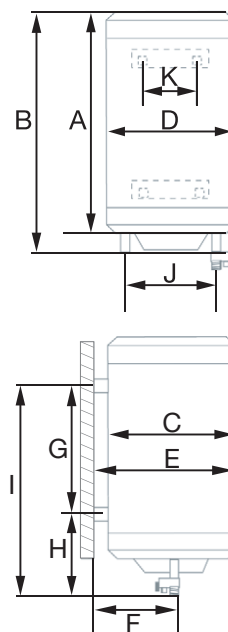
⦿ SUPPORT TRIPOD

The floor stand is a metallic tripod designed for the large capacity models KWI150DHW2 and KWI200DHW2. This tripod is designed to support up to 260 kg.



☉ KYROS WATER HEATER TECHNICAL CHARACTERISTICS

MODELS	KW1050DHW2	KW1075DHW2	KW1100DHW2	KW1150DHW2	KW1200DHW2
Volume	50	75	100	150	200
DIMENSIONS					
A (mm) - Height	615	865	1,100	900	1,070
B (mm) - Height with connections	685	935	1,170	960	1,120
C (mm) - Width (mm)	404	404	404	580	580
D (mm) - Depth (mm)	404	404	404	580	580
E (mm) - Installed depth (mm)	420	420	420	620	620
F (mm) - Depth from the connections to the wall	120	120	120	178	178
G (mm) - Vertical distance between fixing holes	340	573	768	490	670
H (mm) - Vertical distance from lower fixing holes and connections	215	230	275	355	355
I (mm) - Vertical distance between upper fixing holes and connections	555	803	1,043	845	1,025
J (mm) - distance between connections	160	160	160	235	235
K (mm) - Horizontal distance between fixing holes.	350	350	350	350	350
INSTALLATION					
Position	Vertical	Vertical	Vertical	Vertical	Vertical
Water connection (inches)	1/2"	1/2"	1/2"	3/4"	3/4"
Electrolytic fittings	✓	✓	✓	✓	✓
Support Tripod (optional)				✓	✓
MECHANICAL CHARACTERISTICS					
Touch Pad	✓	✓	✓	✓	✓
Maximum working pressure (bar)	9	9	9	9	9
Enamelled steel tank	✓	✓	✓	✓	✓
Magnesium anode protector	✓	✓	✓	✓	✓
CFC free polyurethane insulation	✓	✓	✓	✓	✓
Empty weight (kg)	18	25	32	44	56
Colour	White RAL 9016				
ELECTRICAL CHARACTERISTICS					
N° Heating Elements x Power (w)	2 x 1,200	2 x 1,200	2 x 1,200	2 x 1,200	2 x 1,200
Nominal power (W)	2,400	2,400	2,400	2,400	2,400
Effective power (W)*	456	456	456	456	456
Voltage (V)	230 V ~	230 V ~	230 V ~	230 V ~	230 V ~
Current (A)	10.4	10.4	10.4	10.4	10.4
Safety thermostat	✓	✓	✓	✓	✓
FUNCTIONALITY					
TFT (1.77")	✓	✓	✓	✓	✓
Manual/Automatic Function	✓	✓	✓	✓	✓
ECO/Comfort Modes	✓	✓	✓	✓	✓
Anti-frost	✓	✓	✓	✓	✓
Selectable temperatures between 40-73°C	✓	✓	✓	✓	✓
Anti-legionella	✓	✓	✓	✓	✓
Temperature evolution function	✓	✓	✓	✓	✓
Screen illumination	✓	✓	✓	✓	✓
Programmable 24/7 via control panel and/or AIR Control	✓	✓	✓	✓	✓
PERFORMANCE AND SAFETY					
Fuzzy Logic Control Energy	✓	✓	✓	✓	✓
Rointe ULP8 Microcontroller	✓	✓	✓	✓	✓
Cold water entry diffuser	✓	✓	✓	✓	✓
Safety valve	✓	✓	✓	✓	✓
Steady state consumption (kWh/24h)	1.1	1.4	1.6	2.0	2.4
Protection grade	IP 44	IP 44	IP 44	IP 44	IP 44
CERTIFICATIONS					
2004/108 / EC Support Electromagnetic	✓	✓	✓	✓	✓
2006/95 / EC Electronic Security	✓	✓	✓	✓	✓



* The effective power is the actual power necessary to supply hot water for a family of 4 using 120L/day and with the established temperature of 73°C within predetermined parameters and in accordance with the results of tests made in independent laboratories.



AIR CONTROL REMOTE CONTROL ROINTE KYROS SYSTEM CONTROL IN THE PALM OF YOUR HAND

The AIR Control infrared remote control stems from the need to integrate in one device **control of all products that make up the KYROS Series heating systems.**

Its ergonomic design is perfectly suited to any user and has easy to use keys.

INFRARED



ERGONOMIC BODY MADE IN PC/ABS

Made of flame retardant polycarbonate with high resistance to impacts, and an elegant design 21 mm in depth for a comfortable operation.



TRANSPARENT WALL BRACKET INCLUDED

Functional accessory that allows the remote control to be always in the same place, avoiding dropping and losing it.



ELECTRONIC SMD & ADVANCED TECHNOLOGY

Electronic multilayered surface mounting with built-in Rointe ULP4 Ultra Low Power microcontroller.



TFT SCREEN

Latest generation TFT display 1.77" and high contrast for optimal viewing from any angle.



TWO-WAY INFRARED

Bi-directional wireless connection enables programming that, once sent to the product, can be received and copied into another product.



COMPACT MECHANICAL KEYBOARD

Composed of twenty keys divided into three distinct zones corresponding to the days of the week, programming and power and auxiliary functions.



POWER BY PRE-INSTALLED BATTERIES

Includes two long lasting alkaline batteries of type AAA 1.5 V.



GLOSSY WHITE FINISH

Finish: lacquered in colour RAL 9010 high gloss white.



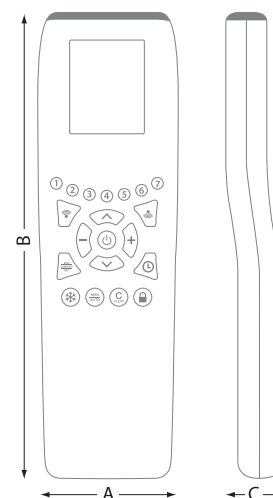
QUALITY ASSURANCE

Total security with 2 years warranty on all electronic components.



AIR CONTROL REMOTE TECHNICAL CHARACTERISTICS

MODELS	ACMI120
DIMENSIONS	
A (mm) - width	54
B (mm) - height	177
C (mm) - depth	21
MECHANICAL CHARACTERISTICS	
Weight (grams)	115
Colour RAL	White 9010
Surround material PC/ABS	PC/ABS
Range operating temperature	-20°C a 55 °C
ELECTRICAL CHARACTERISTICS	
Power	3Vdc
Battery type	2 x 1'5 AAA
COMMUNICATION	
Wireless IR.	✓
Shipping - range (m)	3
Reception - range (m)	1
INSTALLATION	
Wall bracket	✓
Installed depth with support (mm)	25
FUNCTIONS	
TFT screen (1.77")	✓
24 hours / 7 days programmer	✓
Manual / automatic function	✓
Remote memory lock - heating and D.H.W.	✓
Antifrost function	✓
Erasing programming memory	✓
Changing screen brightness - On / Stand-by mode	✓
Display nominal and effective power	✓
ADVANCED FUNCTIONS	
Display software version	✓
Display consumption time	✓
System reset	✓
Display battery level	✓
APPLICABLE REGULATIONS	
CE	✓
ROHS	✓



AIR CONTROL ACCESSORIES

WALL BRACKET

The Rointe AIR Control command includes a transparent, stylish and modern wall bracket which adapts to all types of households and businesses.

This handy accessory allows the remote to always be in the same place, avoiding dropping or losing it.

Program the required settings and place it again in your wall support. This way you will always have it handy and available to use.

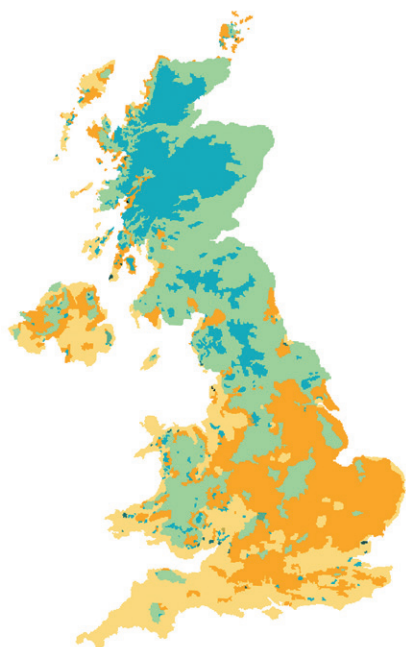
R.T.C.

ROINTE THERMAL COEFFICIENT

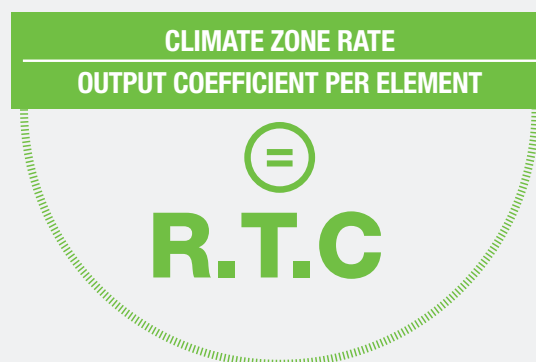
The RTC is a coefficient developed by Rointe that serves to relate the number of elements necessary for a room with its floor area and the geographical area where it is located.

With the correct sizing and using the right RTC, we will obtain a consistent consumption and effective power that is below the nominal power of the installation.

⊙ R.T.C DEPENDING ON THE CLIMATE ZONE



HOW TO OBTAIN THE R.T.C?



	CLIMATE		R.T.C. (m ²)	R.T.C. (m ³)
Mild climate	436 BTU/h m ²	139 BTU/h m ³	0,75 elements / m ²	0,23 elements / m ³
Cold climate	476 BTU/h m ²	159 BTU/h m ³	0,80 elements / m ²	0,26 elements / m ³
Very cold climate	516 BTU/h m ²	179 BTU/h m ³	0,85 elements / m ²	0,30 elements / m ³
Extra cold climate	556 BTU/h m ²	198 BTU/h m ³	0,90 elements / m ²	0,33 elements / m ³

⊙ THE PROPER SIZING

The following formulas relate the required number of elements with the RTC and the area of the room. It is very important to use the correct coefficient depending on the climate and the ceiling height (see table above).

R.T.C. × m² = ELEMENTS NEEDED

R.T.C. × m³ = ELEMENTS NEEDED

Did you know ...?

To calculate the radiators necessary, we have to distinguish between m² and m³. For ceilings with a height less than 3 metres, we use the RTC (m²) and for higher ceilings RTC (m³).



Ⓞ SIZING KYROS RADIATORS: REFERENCE TABLES

In the following tables you can find examples of calculations already made showing number of elements, room area and climate zone.

ESTIMATED SIZING M²

N° DE ELEMENTS	MILD CLIMATE 436 BTU/h m ²	COLD CLIMATE 476 BTU/h m ²	VERY COLD CLIMATE 516 BTU/h m ²	EXTRA COLD CLIMATE 556 BTU/h m ²
3	Up to 4 m ²	Up to 4 m ²	Up to 4 m ²	Up to 3 m ²
5	Up to 7 m ²	Up to 6 m ²	Up to 6 m ²	Up to 6 m ²
7	Up to 10 m ²	Up to 9 m ²	Up to 8 m ²	Up to 8 m ²
9	Up to 12 m ²	Up to 11 m ²	Up to 11 m ²	Up to 10 m ²
11	Up to 15 m ²	Up to 14 m ²	Up to 13 m ²	Up to 12 m ²
13	Up to 18 m ²	Up to 16 m ²	Up to 15 m ²	Up to 15 m ²
15	Up to 20 m ²	Up to 19 m ²	Up to 18 m ²	Up to 17 m ²

ESTIMATED SIZING M³

N° DE ELEMENTS	MILD CLIMATE 139 BTU/h m ³	COLD CLIMATE 159 BTU/h m ³	VERY COLD CLIMATE 179 BTU/h m ³	EXTRA COLD CLIMATE 198 BTU/h m ³
3	Up to 15 m ³	Up to 13 m ³	Up to 11 m ³	Up to 10 m ³
5	Up to 23 m ³	Up to 21 m ³	Up to 18 m ³	Up to 16 m ³
7	Up to 32 m ³	Up to 28 m ³	Up to 25 m ³	Up to 22 m ³
9	Up to 41 m ³	Up to 36 m ³	Up to 31 m ³	Up to 28 m ³
11	Up to 50 m ³	Up to 44 m ³	Up to 38 m ³	Up to 34 m ³
13	Up to 58 m ³	Up to 51 m ³	Up to 45 m ³	Up to 40 m ³
15	Up to 67 m ³	Up to 59 m ³	Up to 51 m ³	Up to 46 m ³

Ⓞ SIZING THE REST OF THE KYROS RANGE

In these tables you can find the estimated sizing for the rest of the Rointe KYROS range of towel rails and water heaters. Its purpose is for reference only and it is recommended that a professional installer makes the personalised calculation on site, whether in a home or business.

TOWEL RAIL RECOMMENDED BY AREA

AREA	POWER	SERIES	MODEL
Up to 3 m ²	300 W	KYROS White/ Metallic	KTI030SEB2/SEM2
Up to 5 m ²	500 W		KTI050SEB2/SEM2
Up to 7 m ²	750 W		KTI075SEB2/SEM2
Up to 10 m ²	1.000 W		KTI100SEB2/SEM2
Up to 2 m ²	300 W	KYROS Chrome	KTI030SEC2
Up to 4 m ²	300 W		KTI050SEC2
Up to 6 m ²	500 W		KTI075SEC2
Up to 8 m ²	750 W		KTI100SEC2

WATER HEATER RECOMMENDED ACCORDING TO USE AND N° PEOPLE

N° OF PEOPLE	RECOMMENDED SIZE	USE
1-2	50 L	Laundry / Sink / Shower
2-4	75 L	Laundry / Sink / Shower
2-5	100 L	Laundry / Sink / Small Bath
3-6	150 / 200 L	Laundry / Sink / Shower / Small Bath

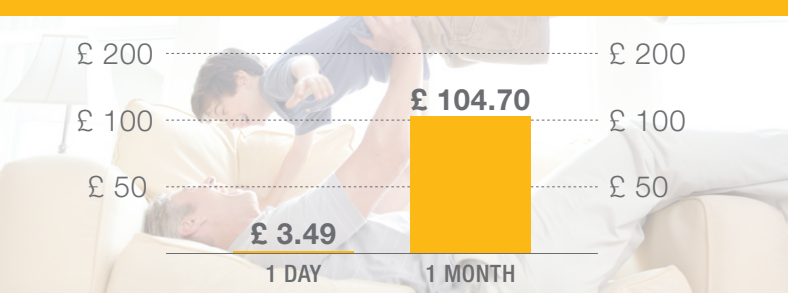
CALCULATION EXAMPLE

IN M² AND M³ LOCATED IN A COLD ZONE

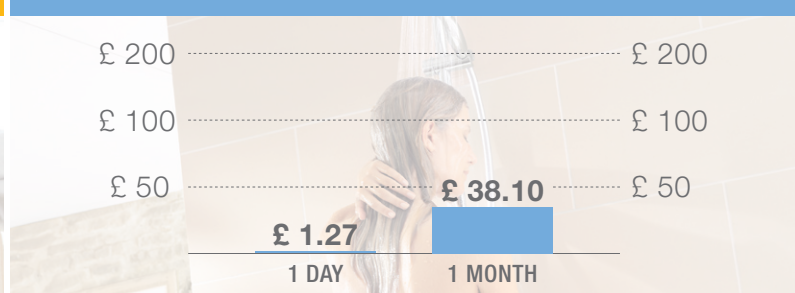
Estimated calculation for an 80m² dwelling located within a cold area of the UK providing 12 hours/day-night maintaining the radiators' set temperature at 21°C. The water heater would be working 24 hours a day, with a draw off profile of 120L/day and the temperature set to 73°C.



☉ HEAT YOUR FAMILY FOR ONLY...



☉ HOT WATER FOR ONLY...



☉ SAMPLE CALCULATION IN M² (CEILING HEIGHT LESS THAN 3 METRES)

ROOM	M ²	RTC	N° OF ELEMENTS	N° OF PRODUCTS	NOMINAL POWER	CONSUMPTION COEFFICIENT RATIO	EFFECTIVE POWER
Living Room	19	0.80	15	1 x KRI1600RAD2	1,600 W	38%	608.00 W
Kitchen	14	0.80	11	1 x KRI1210RAD2	1,210 W	38%	459.80 W
Hall	9	0.80	7	1 x KRI0770RAD2	770 W	38%	292.60 W
Bathroom	6	0.80	5	1 x KRI0550RAD2	550 W	38%	209.00 W
Bedroom 1	12	0.80	9	1 x KRI0990RAD2	990 W	38%	376.20 W
Bedroom 2	10	0.80	7	1 x KRI0770RAD2	770 W	38%	292.60 W
Bedroom 3	10	0.80	7	1 x KRI0770RAD2	770 W	38%	292.60 W
	80 m²		61	7	6,660 W	38%	2,530.80 W
Water Heater 100 L				1 x KWI100DHW2	2,400 W	19%	456 W
NOMINAL POWER INSTALLED / EFFECTIVE POWER USED					9,060 W		2,986.80 W

☉ SAMPLE CALCULATION IN M³ (CEILING HEIGHT MORE THAN 3 METRES)

ROOM	M ³	RTC	N° OF ELEMENTS	N° OF PRODUCTS	NOMINAL POWER	CONSUMPTION COEFFICIENT RATIO	EFFECTIVE POWER
Living Room	76	0.26	20	1 x KRI1210RAD2 1 x KRI0990RAD2	2,200 W	38%	836.00 W
Kitchen	56	0.26	15	1 x KRI1600RAD2	1,600 W	38%	608.00 W
Hall	36	0.26	9	1 x KRI0990RAD2	990 W	38%	376.20 W
Bathroom	24	0.26	7	1 x KRI0770RAD2	770 W	38%	292.60 W
Bedroom 1	48	0.26	13	1 x KRI1430RAD2	1,430 W	38%	543.40 W
Bedroom 2	40	0.26	11	1 x KRI1210RAD2	1,210 W	38%	459.80 W
Bedroom 3	40	0.26	11	1 x KRI1210RAD2	1,210 W	38%	459.80 W
	320 m³		86	8	9,410 W	38%	3,575.80 W
Water Heater 100 L				1 x KWI100DHW2	2,400 W	19%	456 W
NOMINAL POWER INSTALLED / EFFECTIVE POWER USED					11,810 W		4,031.80 W

CONSUMPTION CALCULATION

THE CALCULATIONS PROCESS IN M²

⦿ CALCULATION OF THE NOMINAL POWER

$$\text{AREA IN M}^2 \times \text{R.T.C.} = \text{NUMBER OF ELEMENTS} \times \text{110W PER ELEMENT} = \text{NOMINAL POWER}$$

⦿ KYROS RADIATOR / CALCULATION OF EFFECTIVE POWER

⦿ CALCULATION OF EFFECTIVE POWER

NOMINAL POWER	EQUIVALENT RATIO OF CONSUMPTION	EFFECTIVE POWER
6,660 W	38%	2.53 kW



⦿ CALCULATING THE DAILY / MONTHLY COST

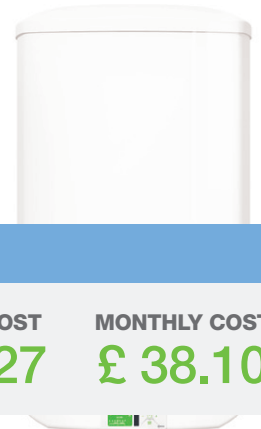
EFFECTIVE POWER	HOURS OF HEATING	UNIT RATE	DAILY COST	MONTHLY COST
2.53 kW	12h	£ 0.115	£ 3.49	£ 104.70

The Rointe KYROS radiator to maintain a stable temperature of 21°C for 12 hours just needs 38% of its nominal power.

⦿ KYROS WATER HEATER / CALCULATION OF EFFECTIVE POWER

⦿ CALCULATION OF EFFECTIVE POWER

NOMINAL POWER	EQUIVALENT RATIO OF CONSUMPTION	EFFECTIVE POWER
2,400 W	19%	0.46 kW



⦿ CALCULATING THE DAILY / MONTHLY COST

EFFECTIVE POWER	HOURS OF D.H.W.	UNIT RATE	DAILY COST	MONTHLY COST
0.46 kW	24h	£ 0.115	£ 1.27	£ 38.10

With a 75 litre KYROS water heater, if we set a temperature of 73°C and have a 120 litres per day consumption profile, it only needs a consumption coefficient ratio of 19%.

⦿ INSTALLATION RECOMMENDATIONS

- 1 In the case of stairs and corridors there is a high risk of heat loss, so it is recommended to increase the result of the calculations by 15%.
- 2 For kitchens, being areas with furniture and a much higher general temperature, we can reduce the output by as much as 10%.
- 3 Avoid placing obstacles near radiators and distribute them in a balanced way. For example, if a room of 21 m² need 18 elements, ideally fit 2 radiators 9 elements each, with equidistant spacing between them.

Remember that these are estimates and should be considered as an average. We recommend that the personalized and detailed study of an installation is always done by a professional installer or Rointe.



Ⓢ DIGITAL ELECTRIC RADIATOR KYROS



REFERENCE	N° ELEMEN.	POWER	VOLTAGE	HEIGHT	WIDTH	DEPTH	WEIGHT	EAN CODE	TP
KRI0330RAD2	3	330 W	230 V	580 mm	350 mm	98 mm	10 kg	8436045913296	£ 271.00
KRI0550RAD2	5	550 W	230 V	580 mm	520 mm	98 mm	14 kg	8436045913302	£ 343.00
KRI0770RAD2	7	770 W	230 V	580 mm	680 mm	98 mm	18 kg	8436045913319	£ 429.00
KRI0990RAD2	9	990 W	230 V	580 mm	840 mm	98 mm	22 kg	8436045913326	£ 490.00
KRI1210RAD2	11	1,210 W	230 V	580 mm	1,010 mm	98 mm	26 kg	8436045913333	£ 544.00
KRI1430RAD2	13	1,430 W	230 V	580 mm	1,180 mm	98 mm	30 kg	8436045913340	£ 602.00
KRI1600RAD2	15	1,600 W	230 V	580 mm	1,330 mm	98 mm	34 kg	8436045913357	£ 672.00

Ⓢ KYROS DIGITAL ELECTRIC TOWEL RAIL - CHROME



REFERENCE	POWER	VOLTAGE	HEIGHT	WIDTH	DEPTH	WEIGHT	EAN CODE	TP
KTI030SEC2	300 W	230 V	900 mm	500 mm	50 mm	11 kg	8436045913401	£ 433.00
KTI050SEC2	300 W	230 V	1,300 mm	500 mm	50 mm	15 kg	8436045913418	£ 558.00
KTI075SEC2	500 W	230 V	1,700 mm	500 mm	50 mm	22 kg	8436045913425	£ 696.00
KTI100SEC2	750 W	230 V	1,900 mm	500 mm	50 mm	28 kg	8436045913432	£ 749.00

Ⓢ KYROS DIGITAL ELECTRIC TOWEL RAIL - METALLIC



REFERENCE	POWER	VOLTAGE	HEIGHT	WIDTH	DEPTH	WEIGHT	EAN CODE	TP
KTI030SEM2	300 W	230 V	900 mm	500 mm	50 mm	11 kg	8436045913487	£ 401.00
KTI050SEM2	500 W	230 V	1,300 mm	500 mm	50 mm	15 kg	8436045913494	£ 501.00
KTI075SEM2	750 W	230 V	1,700 mm	500 mm	50 mm	22 kg	8436045913500	£ 569.00
KTI100SEM2	1,000 W	230 V	1,900 mm	500 mm	50 mm	28 kg	8436045913517	£ 617.00

Ⓢ KYROS DIGITAL ELECTRIC TOWEL RAIL - WHITE



REFERENCE	POWER	VOLTAGE	HEIGHT	WIDTH	DEPTH	WEIGHT	EAN CODE	TP
KTI030SEB2	300 W	230 V	900 mm	500 mm	50 mm	11 kg	8436045913562	£ 272.00
KTI050SEB2	500 W	230 V	1,300 mm	500 mm	50 mm	15 kg	8436045913579	£ 346.00
KTI075SEB2	750 W	230 V	1,700 mm	500 mm	50 mm	22 kg	8436045913586	£ 391.00
KTI100SEB2	1,000 W	230 V	1,900 mm	500 mm	50 mm	28 kg	8436045913593	£ 431.00

Ⓢ KYROS DIGITAL ELECTRIC WATER HEATER



REFERENCE	POWER	VOLTAGE	HEIGHT	WIDTH	DEPTH	EMPTY WEIGHT	CAPACITY	EAN CODE	TP
KWI050DHW2	2,400 W	230 V	685 mm	404 mm	420 mm	18 kg	50 L	8436045913654	£ 630.00
KWI075DHW2	2,400 W	230 V	935 mm	404 mm	420 mm	25 kg	75 L	8436045913661	£ 784.00
KWI100DHW2	2,400 W	230 V	1,170 mm	404 mm	420 mm	32 kg	100 L	8436045913678	£ 869.00
KWI150DHW2	2,400 W	230 V	960 mm	580 mm	620 mm	44 kg	150 L	8436045913685	£ 1,020.00
KWI200DHW2	2,400 W	230 V	1,120 mm	580 mm	620 mm	56 kg	200 L	8436045913692	£ 1,157.00

Ⓢ AIR CONTROL INFRARED REMOTE CONTROL



REFERENCE	COLOUR	HEIGHT	WIDTH	DEPTH	WEIGHT	EAN CODE	TP
ACM1120	White 9010	177 mm	54 mm	21 mm	115 gr	8436045914286	£ 135.00

Infrared remote control supports KYROS range (optional).

ROINTE ACCESSORIES

PROTECTIVE GRILL FOR ROINTE KYROS DIGITAL ELECTRIC RADIATORS

A Protection System specially designed for KYROS radiators (optional), perfect for installation in public spaces.

2 Guarantee

REFERENCE	PROTECTIVE GRILL FOR...	COLOUR	HEIGHT	WIDTH	DEPTH	EAN CODE	TP
RPK0330	KRI0330RAD2	white	660 mm	430 mm	150 mm	8436045910677	£ 73.00
RPK0550	KRI0550RAD2	white	660 mm	600 mm	150 mm	8436045910615	£ 81.00
RPK0770	KRI0770RAD2	white	660 mm	760 mm	150 mm	8436045910622	£ 89.00
RPK0990	KRI0990RAD2	white	660 mm	920 mm	150 mm	8436045910639	£ 98.00
RPK1210	KRI1210RAD2	white	660 mm	1.090 mm	150 mm	8436045910646	£ 109.00
RPK1430	KRI1430RAD2	white	660 mm	1.260 mm	150 mm	8436045910653	£ 119.00
RPK1600	KRI1600RAD2	white	660 mm	1.410 mm	150 mm	8436045910660	£ 131.00



INSTALLATION KIT FOR ROINTE WATER HEATERS

2 Guarantee

REFERENCE	FOR SIZES (L)	EXPANSION VESSEL	TUNDISH	PRESSURE REDUCING VALVE	RELIEF VALVE	EAN CODE	TP
KITRD01	50 L / 75 L	8 litres (0.1 MPa)	15 mm - 25 mm	0.35 Mpa	0.60 Mpa	8436045911322	£ 283.00
KITRD02	100 L / 150 L	12 litres (0.1 MPa)	15 mm - 25 mm	0.35 Mpa	0.60 Mpa	8436045911339	£ 285.00
KITRD03	200 L	18 litres (0.1 MPa)	15 mm - 25 mm	0.35 Mpa	0.60 Mpa	8436045911346	£ 295.00



SUPPORT TRIPOD FOR ROINTE WATER HEATERS

2 Guarantee

The floor stand consists of a metal tripod easily mounted and especially designed for supporting the 150L and 200L digital water heaters. Its installation is especially recommended for cases in that the wall fixings are not sufficient or the stability of the product is not guaranteed, as with models of very high weight when they are at 100% capacity.

REFERENCE	COLOUR	EAN CODE	TP
TPRD001	white	8436045911315	£ 80.00



ENERGY SAVING KIT FOR ROINTE WATER HEATERS

2 Guarantee

Rointe has an energy saving kit, which can be installed close to the hot water outlet. This mixes the hot water with cold water from the main supply and this mixed water is piped to the point of use to arrive at the correct temperature. Using this valve minimizes heat losses through the pipes, saving energy.

REFERENCE	CONNECTION	EAN CODE	TP
RTVAL1814	1/2"	8436045911353	£ 150.00
RTVAL1815	3/4"	8436045911360	£ 180.00



GENERAL CONDITIONS OF SALE

1. OFFERS AND ORDERS

Prices on our price list are for guidance only and may be subject to changes with no prior notice. ROINTE UK must confirm the order corresponding to any offers. Any special conditions included by the purchaser that do not meet the general terms and conditions shall be deemed as null and void, with exception of those cases in which there is a prior agreement specifying such changes confirmed in writing attached to the corresponding order.

2. CANCELLATION OF ORDERS

ROINTE UK reserves the right to cancel orders pending for dispatch if the purchaser has not complied with the payment of any pending invoices, either in full or in part. No orders may be cancelled under the following circumstances:

- If order contains special units whose manufacturing has begun.
- If the items have been dispatched.

3. DELIVERY CONDITIONS

Our products are supplied packaged with brackets, screws and fixings, the cost of which is included in the sale price. Our goods are deemed to be delivered when they are placed on the lorry in our warehouses in UK, except for offers with special conditions, and our liability as a haulier ends at that point.

Confirmed orders may be supplied in partial deliveries, unless the purchaser states otherwise. When the purchaser receives the goods, he/she will write "received pending checking" next to the signature in the haulier's delivery note.

4. PRICES

Prices may be changed by notifying the purchaser and the new prices will be applied to all the orders pending delivery on the date of amendment. If the purchaser does not accept the new price, the order may be cancelled in writing within 8 days of notification of the increase. After this deadline, the new price will be deemed to have been accepted.

All currently applicable taxes and those which in the future may apply to the sale of our products on the date of delivery will be payable by the purchaser. Published prices are valid, except for misprints and are subject to change without prior notice.

5. DELIVERY PERIOD

The delivery dates shown in our order confirmations are for guidance purposes. Failure to comply with them will not be grounds for any reclamation by the purchaser.

6. PAYMENT TERMS

The payment terms will be those shown in our order confirmation, contract made or the conditions agreed. Payment will be made under the conditions agreed with ROINTE UK. Payment may under no circumstances be delayed. Any failure to pay will lead to the immediate cancellation of the guarantee and the orders in progress. While the goods have not been paid for in full, they are deemed to be bonded goods in the purchaser's possession. ROINTE UK may postpone outstanding deliveries if there's grounds to believe that the purchaser will not fulfil the payment conditions. Non-payment of any invoice will be notified to the relevant institution according to the UK regulations.

7. GUARANTEE

All our materials are covered by their respective guarantees for any manufacturing fault from the date of sale and acceptance of the fault by our technical department will be required before the faulty product is returned to us.

8. RETURNS OF PRODUCTS IN GOOD CONDITION

No goods may be returned to our warehouses without our prior authorization, and a charge of at least 15% of their original price will be payable to cover reception, inspection and fault registration costs. All returns must arrive at no cost to Rointe UK.

9. JURISDICTION

For the resolution of any discrepancy, the parties specifically submit to the ordinary jurisdiction of UK, specially waiving any personal or material jurisdiction to which they may be entitled. These general terms of sale will apply to all trade relations between ROINTE UK and its clients, and purchasers accept these general conditions when making an order.

Note: Rointe reserves the right to modify the configuration and presentation of the contents included within this publication. The images published in this price list may not exactly match the final installed product.

KNOW YOUR ROINTE BUSINESS MANAGERS

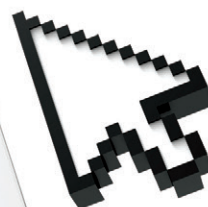
Do you want to know who manages Rointe business in your area? Go now to our website and click on Commercial Map. Here you can see who is your Key Account Manager and Regional Commercial Director. **It's easy, simple and fast!** Do not hesitate! Enter our new website www.rointe.co.uk



 www.rointe.co.uk

 0143 259 8019

Always by your side.



 **ROINTE UNITED KINGDOM & ÉIRE**
Catalyst House, 720 Centennial Court
Centennial Park, Elstree, Herts, WD6 3SY

Tel: 0143 259 8019
Fax: 0143 259 8026

www.rointe.co.uk
rointe@rointe.co.uk

 **ROINTE ESPAÑA Y PORTUGAL**
Pol. Ind. Vicente Antolíns
C/E, Parcela 43, 30140 Santomera, Murcia

Tel: 900 103 061
Fax: 968 277 125

www.rointe.com
rointe@rointe.com

 **ROINTE FRANCE, BELGIQUE, LA SUISSE ET LUXEMBOURG**
Carré Sénart, 6 Allée de la Connaissance
Liesaint 77127, Paris

Tel: 1 64 05 10 08
Fax: 9 70 60 03 50

www.rointe.fr
rointe@rointe.fr